

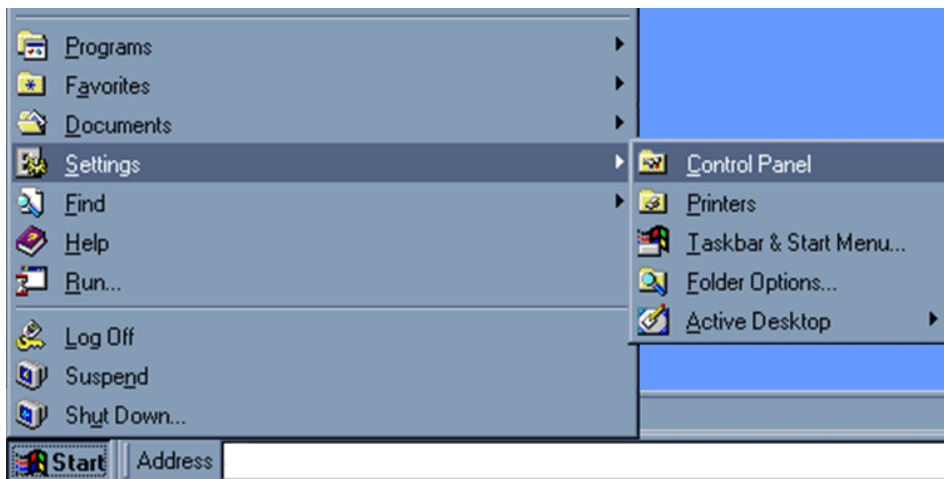
Changing Your Screen Resolution

Note:

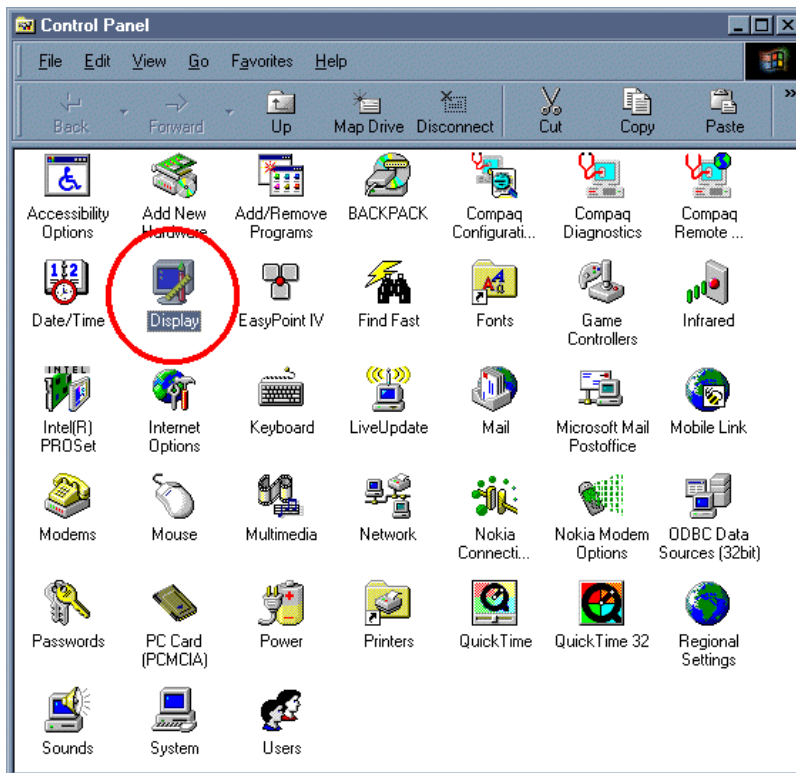
A display resolution of 1024 x 768 or higher is pretty much the standard display setting used today, especially as most PCs now have a 17" monitor or larger. Older PCs (i.e., computers bought before 1997/98) and in particular those with a 14" or 15" monitors are probably set to use a resolution setting of only 800 x 600.

Below is a simple step-by-step guide on how to change the display resolution of your Windows XP based PC. Read the instructions fully before attempting to change your display settings. *If you are unsure as to what resolution you are currently using, Steps 1 to 3 can also act as a guide to help you check your settings.*

STEP 1 : Click on Start, Settings and select "Control Panel" from the menu that appears.



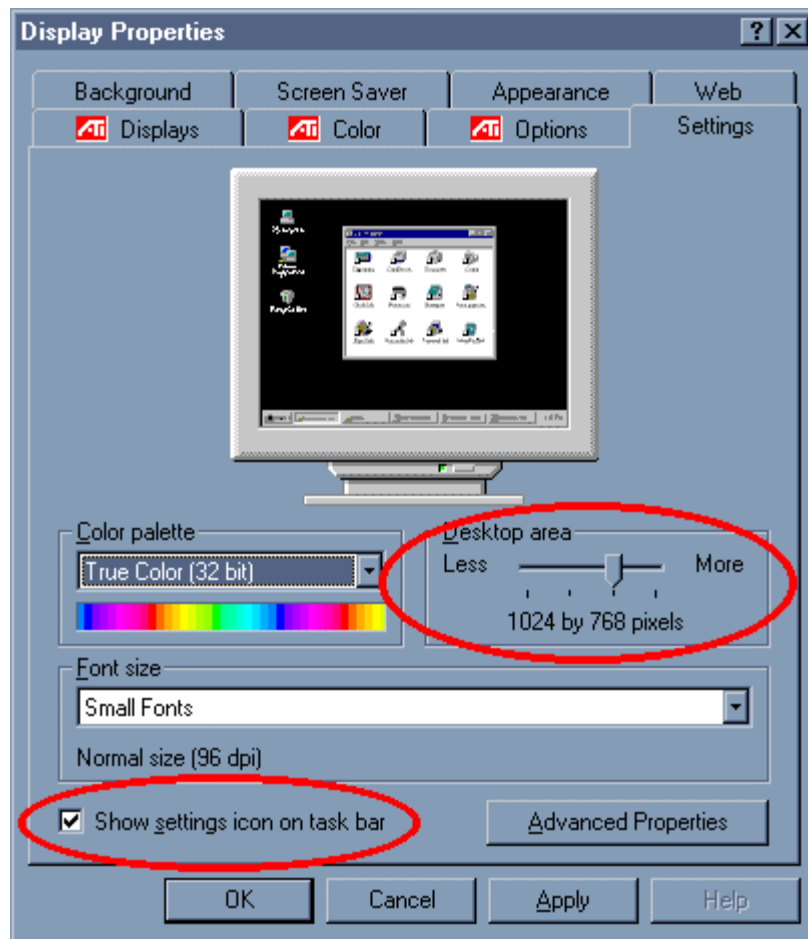
STEP 2 : In the Control Panel you will see an icon called "Display". Double-click on that icon.



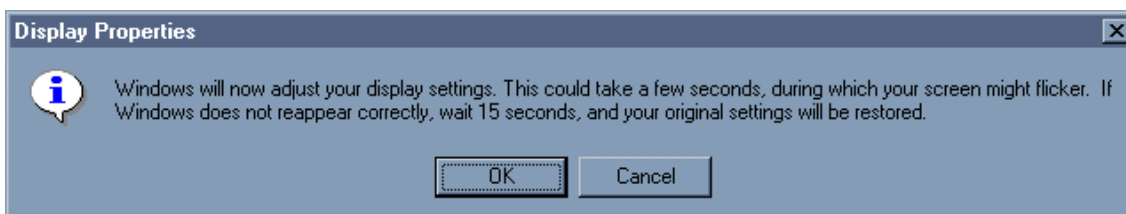
STEP 3 : You have opened a "Display Properties" options box similar to the example shown below. Depending on the make and model of your PC and the video card installed, a slightly different Display Properties option box might appear but you will find a "Settings" tab. Click on that tab.

In the Settings section you will see a "Desktop Area" option with a sliding ruler. This option will indicate to you what display resolution your PC is currently using (e.g., "800 by 600 pixels" or "1024 by 768 pixels").

Using the sliding ruler, change the display resolution to 1024 x 768 or higher and click the 'Apply' button.



STEP 4 : You may now get the following prompt as shown below. Later versions of Microsoft Windows have this check built in to make sure your video card and its installed software driver are capable of using the resolution you are about to adopt. Click the 'OK' button and wait.



Your screen will go blank (or flicker) and after a few seconds a display will reappear. If your PC is capable of displaying a resolution of 1024 x 768, you will now see a 'tighter' display (e.g. smaller icons etc.) and your screen area will appear to have become larger (i.e., it will seem to fit more onto the screen). Click "OK" on the final pop-up window that appears, and you are now finished.